

## Installation TRITON su BMW R1100 1150 GS

*Verified that the battery of the motion is perfectly loads*



The installation of eeprom the TRITON previews the substitution of chip in the central unit the Bosch Motronic BUT 2,2, situated under the tank of the fuel.



To raise the tank is a extremely easy operation. He is sufficient to unscrew the only screw to present brugola on the skillful, accessible side being removed the lateral in fixed black plastic to pressure. After to have unscrewed the bolt, the tank is free to slide to behind and can be raised without difficulty.

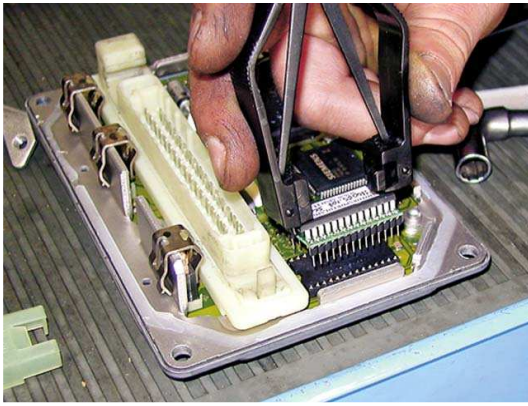


In order to approach the telephone exchange, the tank of the fuel can simply be raised or taken apart entire. In this last case, but, it is necessary to d3connecter the wiring electrical worker of the pump of the fuel and the small tubes of flow of the fuel, being had the shrewdness to obstruct of the escape.

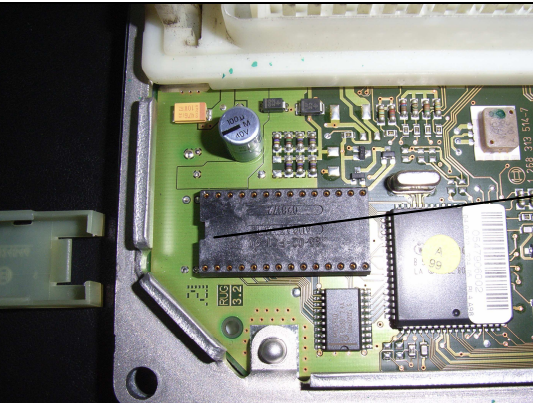
The Bosch Motronic BUT 2,2 is by now to hand capacity. Situated in proximity of the battery, it is fixed stablily, through chassis in aluminum and four bolts, to the structure in below sheet. Before detaching the large connector of the telephone exchange, he is indispensable to at least d3connecter a pole of the battery in order to avoid damages that could cost beloveds.



In order to unblock the large connector of the telephone exchange it is necessary to uncouple with a screwdriver the clip of detention in steel situated on the skillful side.



Here like opening the telephone exchange: the two metallic semishells are fixed between them with four screws using Torx and a silicone thread along all the perimeter, that it can easily be eliminated with a common one cutter. For the extraction and the successive insert of the EPROM it is advisable to use an appropriate extracting machine, to find in a whichever store of electronics or with a screwdriver to flat head to extract inserting it delicately between EPROM and the card before from a part and then from the other. Therefore you will avoid to fold the multi-foot of the EPROM originates them.



You take in hand EPROM the Triton and identify the back of insertion, given from the notch on the high part of the EPROM and from the support in black plastic where heel is present one and insert delicately. The two heels will be therefore one over to the other. Attention: the corrected insertion of the EPROM inside avoids the loss total of the data of the same one damaging itself.



Before close the central unit be advisable restore the seal of the semishell with of the common silicone.



In this way impermeability of the unit from humidity and soil is guaranteed.

**Attention: We hold to specify that this is a modification racing and therefore for use pista/racing. The company BMW manufacturer and also we decline every responsibility deriving from the wrong installation, from the lacked correct maintenance the motion and from whichever problem he can be taken place chased to the Triton installation. He is much simple one to install it but we advise you to make to make it from a specialistic center BMW.**

**In the use racing the maintenance they go doubles to you.**